



Wood Green
SIXTH FORM
ACADEMY



SIXTH FORM PROSPECTUS 2024

BELIEVE ACHIEVE SUCCEED

EXPLORE OUR CONTENTS

A Warm Welcome to our Sixth Form	2
Discover our Pathways	3
Pathway Requirements	4
Planning your Pathways	5
Opportunities in Sixth Form	6

MORE ABOUT OUR SIXTH FORM

Celebrating our Student Success	7
Discover more about our Higher Education Support	8
Discover our Amazing Facilities	9-10



A WARM WELCOME TO OUR SIXTH FORM



With over 50 years of experience in providing gold-standard Post-16 education, Wood Green Academy Sixth Form Centre's success is due to its investment in the interests of its students.

Our 'believe, achieve and succeed' attitude helps students throughout their journey towards attaining their ambitions, and our school-wide focus on developing independence means that graduates enter Higher Education, apprenticeships or employment with confidence.



WHY WOOD GREEN ACADEMY?

This is your opportunity to be a part of a successful and thriving Sixth Form, which currently stands at over 250 students, all of whom are on Advanced Level courses. Life in the Sixth Form is a pleasant and enriching experience. High standards are set for achievement and progress. Academic progress is monitored and reviewed. All students are expected to show a degree of responsibility, maturity and self-discipline which befits people of their age. We expect all our students to maintain a high standard of conduct and attitude towards others.

"Students in the Sixth Form are exceptionally articulate ambassadors for the school, showing a high degree of maturity, confidence and commitment." Ofsted

YOU'RE IN GOOD HANDS



The prime aim for every student must be to improve their academic qualifications. We have a dedicated, caring and committed team of subject teachers, pastoral tutors, academic coaches and support staff. Staff are well qualified, experienced and successful subject specialists, who confidently teach to all levels up to university entrance. We help all students to succeed in a supportive and friendly environment.



Miss D Cavell – Student Support Manager for Sixth Form
Miss L Stocks – Director of Sixth Form
Mrs A Clifton – Post 18 Destinations Manager

DISCOVER OUR PATHWAYS

We offer a diverse curriculum with a wide range of Post-16 subjects that will allow you to combine our pathways. Students can make the decision to follow one pathway or to combine A-Level subjects with vocational subjects.

With a variety of sought-after A-level courses such as Mathematics, Chemistry, and Physics, as well as exciting new additions like A-level Photography, our Extended Diplomas and Vocational Criminology, there is a pathway to cater for every successful applicant at Wood Green Academy.

Students have the choice of three pathways: A-Levels, vocational (including full time courses) or combined (A-levels and vocational courses).

A-LEVEL PATHWAY

Accounting
Art
Biology
Business Studies
Chemistry
Computer Science
Design and Technology
Drama and Theatre
English Language
English Literature
EPQ (Extended Project Qualification)
Further Mathematics
Geography
German
History
Mathematics
Media Studies
Music
Photography
Physical Education
Physics
Psychology
Religious Studies
Sociology

VOCATIONAL LEVEL 3

Business (Single & Double Award)
Criminology
Health & Social (Single & Double Award)
ICT
Sport Certificate

VOCATIONAL FULL TIME

Extended Diploma in Business
Extended Diploma in Health & Social Care



For more information about all the courses such as entry requirements, topics covered, assessment information and progression route please scan the QR Code which will direct you straight to the sixth form pathway page on our website.

PATHWAY REQUIREMENTS



A-LEVEL PATHWAY

Sixth Form entry criteria: a minimum of 5 9-5 GCSE grades, which must include a grade 5 or above in either English Language or English Literature. If students do not have a grade 4+ in GCSE Maths they will be required to re-sit this qualification. In addition, the minimum subject entry criteria must be met.

A-LEVEL PATHWAY		
Accounting	GCSE Maths 5+	
Art	GCSE Art & Design 5+	
Biology	GCSE Maths 6+	GCSE Science 6 6 + OR Biology 6+
Business Studies	GCSE Maths 5+	GCSE Business Studies 5+ (if studied)
Chemistry	GCSE Maths 6+	GCSE Science 6 6 + OR Chemistry 6+
Computer Science	GCSE Maths 5+	GCSE Computer Science 5+ (if studied)
Design and Technology	GCSE Design and Technology 5+	
Drama	GCSE Drama 5+ (if studied)	
English Language	GCSE English Language 6+	
English Literature	GCSE English Literature 6+	
Further Maths	GCSE Maths 7+	Students MUST also study A Level Maths
Geography	GCSE Geography 5+	GCSE Maths 5+
German	GCSE German 6+	
History	GCSE History 5+	
Maths	GCSE Maths 6+	
Media Studies	GCSE Media Studies 5+ (if studied)	
Music	GCSE Music 5+	Grade 4+ in chosen instrument
Photography	GCSE Art & Design 5+ OR Media Studies 5+ OR Design and Technology 5+	
PE	GCSE Science 4 4+	GCSE PE 5+ OR BTEC Sport Merit+
Physics	GCSE Maths 6+	GCSE Science 6 6+ OR Physics 6+
Psychology	GCSE Maths 5+	GCSE Psychology 5+ (if studied)
Religious Studies	GCSE Religious Studies 5+ (if studied)	
Sociology	GCSE Sociology 5+ (if studied)	

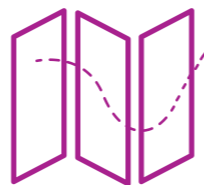
VOCATIONAL PATHWAY

The Sixth Form entry criteria is a minimum of 5 GCSE grades 9 to 4, which must include a grade 4 or above in Maths and either English Language or English Literature. In addition, the minimum subject entry criteria must be met.

VOCATIONAL PATHWAY	
Business (Single & Double)	GCSE Business Studies 4+ (if studied)
Criminology	GCSE English 5+
Health & Social Care (Single & Double)	Level 2 Health and Social Care Merit + (if studied)
ICT	Level 2 ICT Merit+ (if studied)
Sport Certificate	GCSE PE 5+ OR BTEC Sport Merit+

FULL TIME VOCATIONAL PATHWAY	
Business	GCSE Business Studies 4+ (if studied)
Health & Social Care	Level 2 Health and Social Care Merit + (if studied)

PLANNING YOUR PATHWAY



Applicants may choose one subject from each option block, and must be studying a minimum of three A-level subjects if following an academic pathway. Applicants can choose three subjects from each vocational block. Students can combine vocational and A-Level pathways if the entry requirements are met. Students opting to study a full time vocational Extended Diploma are not required to choose any other subjects.

Please note that, if choosing to study Health and Social (double) or Business (double), then you are unable to choose a subject where the single award is present. If choosing the full time vocational Extended Diploma in Health and Social Care or Business, no other subject needs to be chosen.

Block A	Block B	Block C	Block D	Block E
Further Maths	Accounting	Art	Biology	Business
	Chemistry	Business	Computer Science	Chemistry
	Geography	Biology	English Literature	Design and Technology
	Mathematics	English Language	Drama	History
	Media Studies	Psychology	German	Physics
	PE	RE	Mathematics	Sociology
	Psychology	Music	Photography	
	Business Double	Sport	Criminology	Business Single
	Health and Social Double	ICT		Health and Social Care Single
	Full Time Vocational Extended Diploma in Business			
Full Time Vocational Extended Diploma in Health and Social Care				

Please note that all courses are subject to viable student numbers and the subjects in each option block may change.

OPPORTUNITIES IN SIXTH FORM

ENRICHMENT

We have a wide range of enrichment and extracurricular activities to suit everyone, from supporting lower school classes to charity events. There are many opportunities for everyone to get involved in school life:

- Sixth Form Committee
- Paired Reading Scheme
- Mentoring
- Work Experience/Shadowing
- Visits to Universities
- School Production
- Ambassadors
- Assisting with lower school classes and clubs



SIXTH FORM AMBASSADORS

The ambassador programme at Wood Green Academy gives students an opportunity to develop a range of skills that will prepare them for life after Year 13.

Students get involved in taking a lead role in the delivery of activities, charity events and the mentoring of younger students. The successful applicants will act as internal and external ambassadors of the school and will act as role models for all students at Wood Green Academy.

Ambassadors have previously taken part in the organisation of events to raise money for 'Movember' 'Macmillan Cancer support', the 'British Heart Foundation' and 'Smile For Joel'. They also play an important part in ensuring that the views of sixth form students are shared appropriately and through the correct channels and structures.

The Sixth Form ambassadors led a session on the Year 12 induction days, sharing their experiences of Wood Green Academy with prospective students, giving key tips on the transition up to Post-16 studies. Sixth Form ambassadors have also visited the Houses of Parliament.

BURSARY

The Sixth Form runs a financial bursary scheme which students will be informed about once they have enrolled as a student.



CELEBRATING OUR STUDENTS SUCCESS



POST-18 CHOICES

We are a centre of excellence for A-Level and vocational courses. We would like to take this opportunity to congratulate all our students on their continued hard work which has been reflected through this year's outstanding results.

We are very proud of the part we play in helping students go on to university and careers of their choice.

There were 91 students who successfully obtained a university place across 24 different Higher Education institutions including:



OTHER STUDENTS WENT ON TO EMPLOYMENT AND HIGHER LEVEL APPRENTICESHIPS.



During my time at Sixth Form, I studied Biology, Chemistry and Mathematics. I found that my peers and I were treated more like adults at Post-16 level, which helped me develop better working relationships with my teachers when compared to my GCSE studies. A-level content is more challenging than GCSE level; overcoming this challenge helped me to become a more independent learner, which is great preparation for university and my future career. There is a strong support system in Sixth Form – the teachers always make time for you if you need them. Sixth Form also provided me with many opportunities, one of which was encouragement to undergo work experience; this was what enabled me to identify my dream career.

My teachers always provided useful information regarding my Post-16 choices, including details about university open days, apprenticeships, and work experience opportunities. Whilst Sixth Form is challenging, there are also many opportunities to relax and socialise and so I had lots of fun during my time at Wood Green Academy – my favourite stress-busting activity was playing pool in the Common Room at lunch time. I now feel ready to move on to the next chapter of my life, where I will be starting a degree apprenticeship in Manufacturing Engineering this September.

- SIMONE ALI



At Sixth Form, I studied A-levels in Psychology, English Language, and Health & Social Care (single award). I found A-levels more challenging than GCSEs; there were particular topics that I found difficult to understand, and so I was extremely grateful for the support system available from my subject teachers, who would happily run revision sessions over lunch time or during my independent study time. This improved my confidence when taking on the challenge of A-levels and helped to fully prepare me for my assessments and exams. I developed positive relationships with my teachers, who treated me more like an adult. As a result of this, I felt classes were more relaxed and enjoyable compared to lower school; this meant I felt more confident to ask when I needed help.

Sixth Form has also enabled me to get involved with school activities via the Student Ambassador Leadership Programme, which included organising and participating in charity events, helping out at opening evenings, and talking to school visitors about the benefits of the school. These have all provided me with valuable communication skills and confidence that I can take with me beyond Sixth Form. I enjoyed my time at Sixth Form and want to thank all my teachers who helped me get to where I am today: studying Psychology at the University of Warwick!

- GURPREET CHEEMA

DISCOVER MORE ABOUT OUR HIGHER EDUCATION SUPPORT



At Wood Green Academy, we are keen to support students with the next steps in their education. We work with two external organisations who provide guidance with decision-making when it comes to university choices.

THE ACCESS PROJECT

Wood Green Academy is one of 35 schools in the country that works with The Access Project. We have a University Access Officer in school two days each week who can offer advice and guidance with a focus on applications to top universities.



CORE PROGRAMME

20 students in Years 12 and 13 have access to specific support that helps them to access top universities through a unique combination of free, subject-specific tuition and in-school mentoring. They work with the students to help them produce quality applications, achieve the grades required, and go on to make a successful transition to university.

SOCIETIES

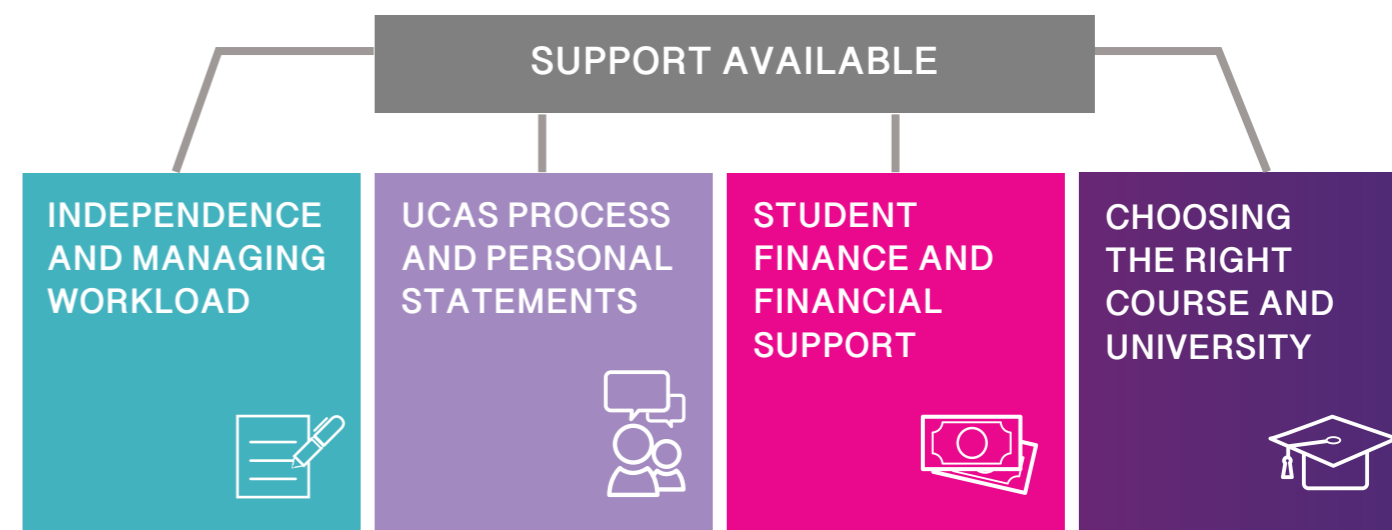
Any student in Year 12 who is interested in studying Medicine or Dentistry or plans to study higher education at Oxford or Cambridge, can apply to be a part of The Access Project societies. The societies provide specific support to form a competitive application to these courses and institutions.

ASPIRE TO HIGHER EDUCATION

If you are unsure whether university is the right pathway for you, staff from ASPIRE to Higher Education (HE) can provide guidance and support with your decision-making. Aspire to HE would like to support as many students as possible to help them make informed and ambitious decisions about their future.



To be able to support the students, Aspire to HE offers a range of sessions regarding university choices



AMAZING FACILITIES

OUR FACILITIES ARE MADE TO PROVIDE YOU WITH A MODERN LEARNING AND SOCIAL ENVIRONMENT.

Our Sixth Form students benefit from a newly-refurbished Common Room. This is an area to relax and socialise between studying, and helps our students to feel refreshed and ready to learn – whether they are chatting with their peers, making use of the wide, flat screen television, or simply having a cup of tea.

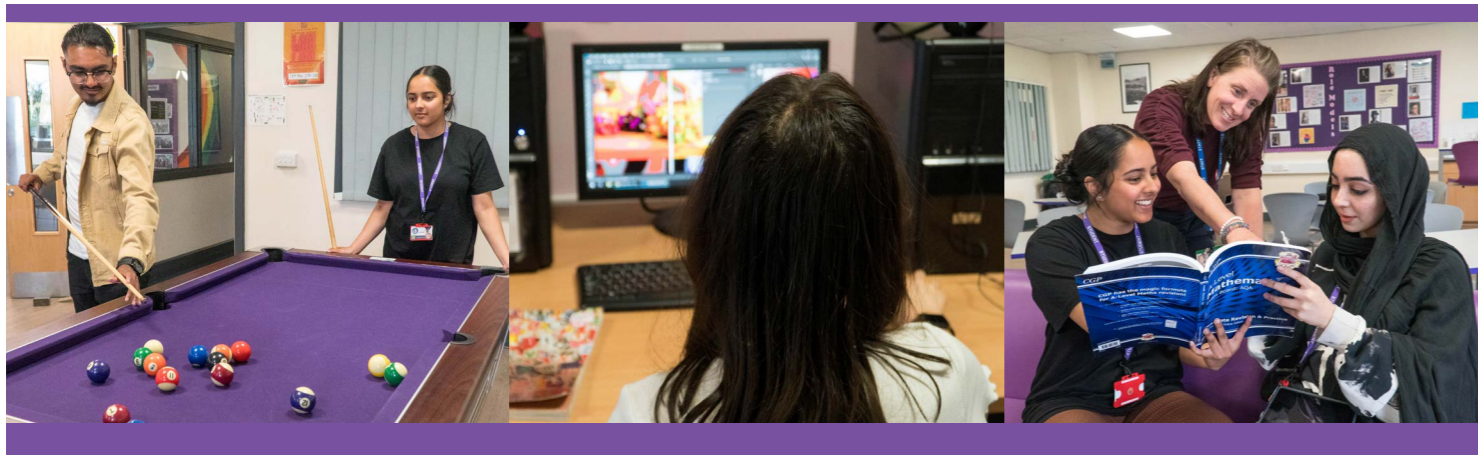
ICT SUITES & EQUIPMENT

The Sixth Form area has two additional study rooms: an ICT Suite fully-equipped with computers and printing facilities, and another study space overlooking the school field, where students have the opportunity to focus on their work in a quiet and reflective environment. All Sixth Form students are also provided with a device such as a laptop to aid them in their studies.

THE LEARNING HUB

The Learning Hub is a wonderful multi-purpose space: we host a library of over 9000 books to aid with personal and academic growth; we have a newly updated computer suite with access to printing; the Learning Hub team facilitate tutoring and guided revision sessions as well as allowing time for independent study. As the “hub” of the school, the space is also used to host various themed events throughout the year, all of which contribute to the culture of learning and development that Wood Green Academy is known for.

A safe and inclusive space for all, The Learning Hub is open to Sixth Form students before, during and after school.



“As an ambitious student, it was amazing to be in an environment that has challenged me in my studies as well as given me the opportunity to cultivate skills that have helped me post Sixth Form.”
- Chinia Hutchinson

Wood Green Academy Sixth Form

Wood Green Road
Wednesbury
West Midlands
WS10 9QU



Contact Information

Phone: 0121 556 4131

Email: sixthform@woodgreenacademy.co.uk

Our Socials



www.woodgreenacademy.co.uk
